



CURTAIN MOTOR & TRACK SYSTEM

CURTAIN MOTOR & TRACK SYSTEM OPERATION MANUAL

(N09、N10、N11、N15)



 www.smarthomebus.com  digitcom@eim.ae



SMARTHOME GROUP DUBAI

Tel : +971 4 339 3165
Fax : +971 4 339 3167
Addr : Showroom 3A, Al Shah A S A Buhamad
Building, Sheikh Zayed Road, Dubai, UAE
PO Box 31255



CHINA SHIMA ELECTRONIC CO.,LTD

Tel : +86 769 8393 8867(813)
Fax : +86 769 8117 8867
Addr : No.135, Huancheng Road, Mawu Village, Qiaoli
Management Community, ChangpingTown, Dongguan city,
Guangdong province, China.



ISO 9001:2008

 www.smarthomebus.com

Curtain motor operation manual

SmartGroup motorized curtain upgraded products of the manual curtain, it can not only solve a series of problems such as sun radiation, heat, but also can create a convenient and comfortable environment for you. we advocate the green environmental protection idea, and also have a specialized research on energy saving, safety and environmental protection, all these will make the motor life longer and more durable. The motorized curtain system can avoid the damage caused by artificial operation.

5 INNOVATION

High and accurate memory route

High and accurate route testing system, make the route range more refining and accurate, then can reach the memory position more quickly and accurately.

Mechanical clutch device which integrated with hand-operated and automatic function

National patent technology, Patent No.: ZL 2011 2 0010345.7 Certificate No.: No. 18 70896

FSK Frequency modulation mode Frequency: 868MHz

With the characters of strong anti-interference ability, high receiving sensitivity, stable Center frequency, Convenient Debugging and so on.

It has external central control transmitter support features

Realize remote control operation, Intelligent control and so on

Support six dry contact switch control mode(Unique innovation)

Choose a different connection mode based on different switch, make whole switch in family can be unified style, and improve your taste.

8 FUNCTIONS



Opening And Closing Curtain



Wired



Wireless



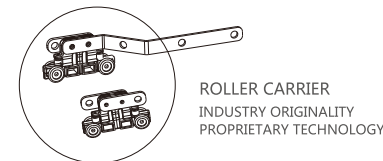
Central Control

1. Motor has specific memory function, automatic stop sensor for the travel (no need to set travel in advance).
2. With hand-operated & motor operated mode, both are easy to operate.
3. One-stop design, built in receiver and with external interface (2×RJ11interface)
4. Motor can start by itself by pulling just 20cm of the fabric (no need the transmitter).
5. The complete set of system with the best material, with high quality coating inside out of the track, belt with steel wire, and cloth on both side, all the hardware accessories are made of stainless steel.
6. Group control, central control.
7. "S" style rope runner combination "patent design, easy to assemble and disassemble, pretty appearance, can be designed to a dynamic S style movable curtain.
8. Strong power, low noise design, different bending track can be customized.

N09、N10、N11、N15 Curtain Motor Fully Upgrade

Feature 1

Combine principle of smooth, 360°all-around slide, make the curtain more smooth, quiet.

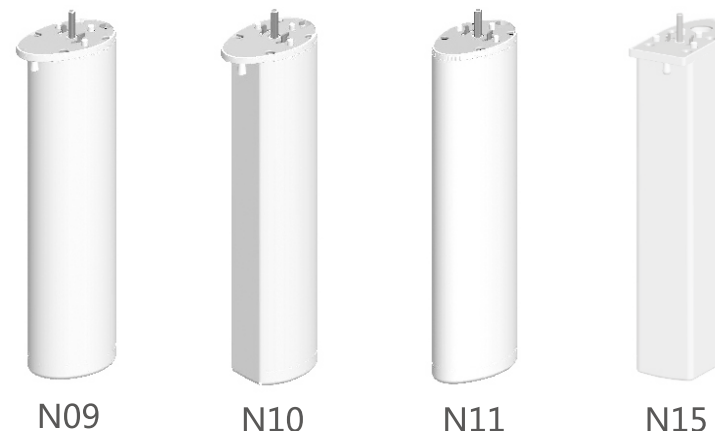


Feature 2

Human design, make the motor (not only single motor but also double motor) can be assembled upward, downward, and hiding inside of the ceiling.



N09、N10、N11、N15 Curtain Motor Appearance



B Bearing Capacity Parameter Table

Units: KG

	track style	fabric length							
		!&	'&	\$#&	!&	'&	\$#&	!&	'&
Single Motor	!&								
	'&								
	\$#&								
	!&								
Double Motor	!&								
	'&								
	\$#&								
	!&								

Tagging: Double Single

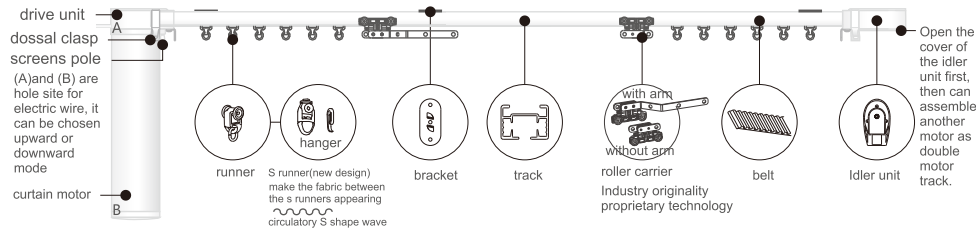
Remark:

1. Shown in the table above, the maximum bearing capacity of the single and double motor to suit the different tracks (length / open mode) as we list. When calculate the maximum bearing capacity of the motor, please take the fabric wrinkles rate into consideration. Hereby we recommend the formula to calculate the fabric weight as follows:
Fabric weight = fabric weight kg/ m² * fabric area covered m² * wrinkles rate
2. In the table above, the motor maximum bearing capacity don't contain the extra momentum between fabric, track and curtain box.

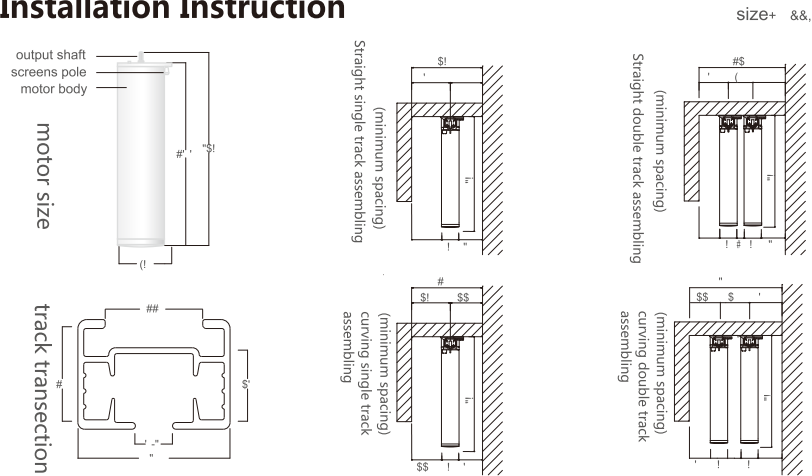
P Curtain Motor Parameter Table

Parameter Name	1N.m	2N.m	Parameter Name	1N.m	2N.m
Weight (kg)	1	1	open/close speed(cm/s)	20	20
input voltage(v)	200-230	200-230	input(V)	50	80
working voltage(v)	220	220	output(V)	12	12
maximum current(mA)	230	360	maximum length to join the straight track (m)	110	110

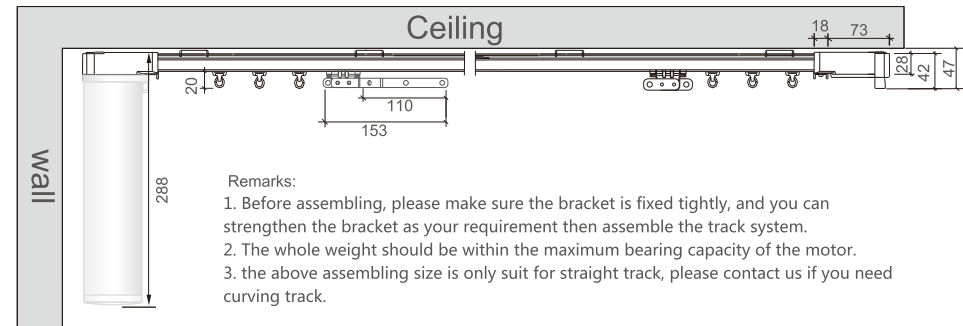
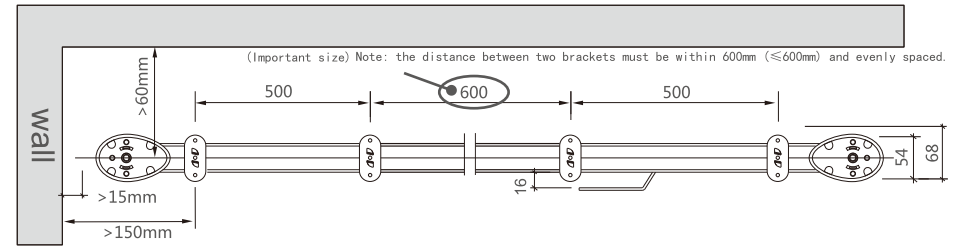
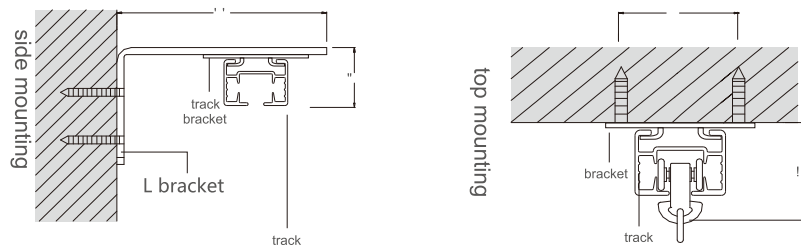
S Curtain Motor Sketch Map



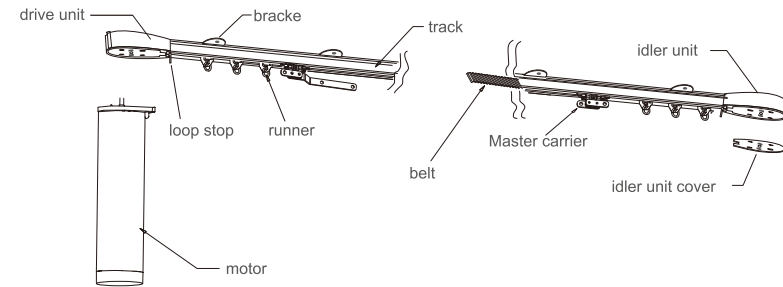
I Installation Instruction



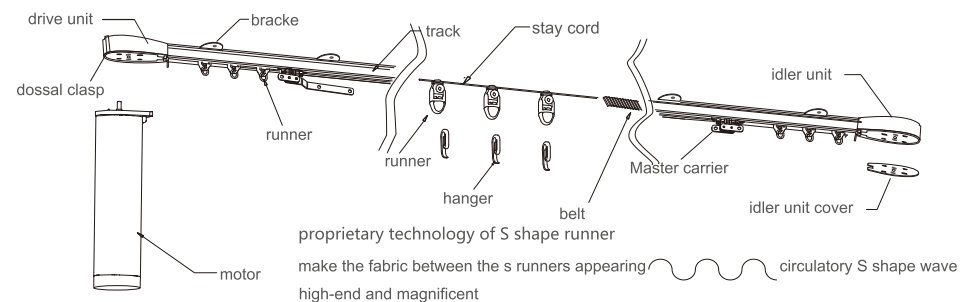
I Installation Instruction



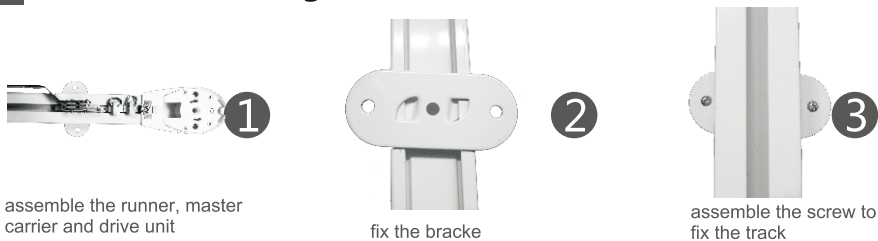
S Curtain Motor Structural Drawing



S S Shape Curtain Motor Structural Drawing

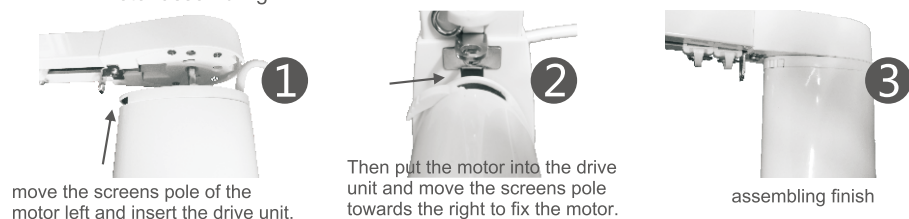


T Track Assembling

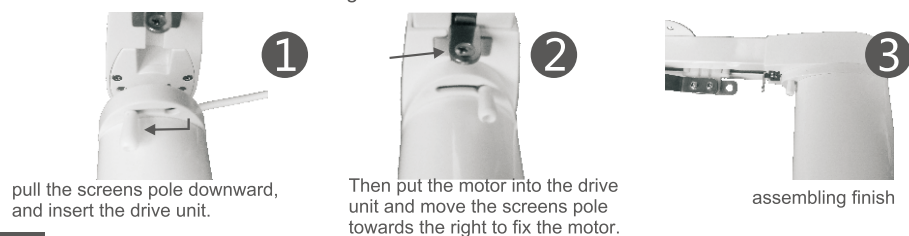


M Motor Assembling

N11 motor assembling

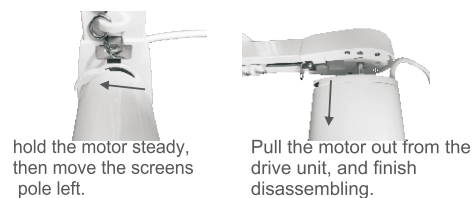


N09/N10/N15 motor assembling

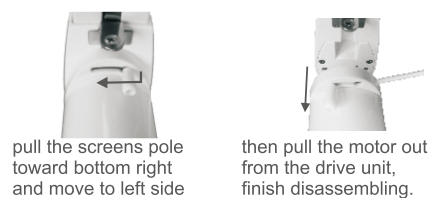


D Motor Disassembling

N11 motor assembling



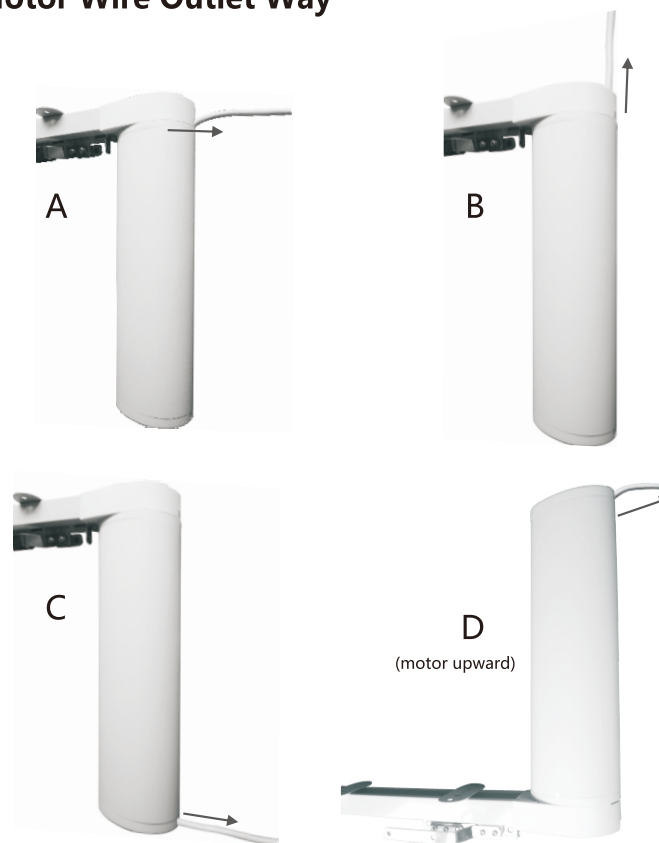
N09/N10/N15 motor disassembling



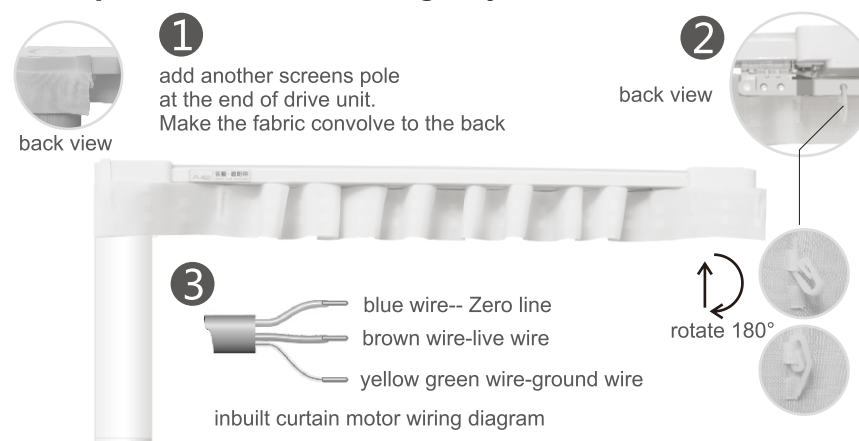
C Motor Rear Cover Disassembling



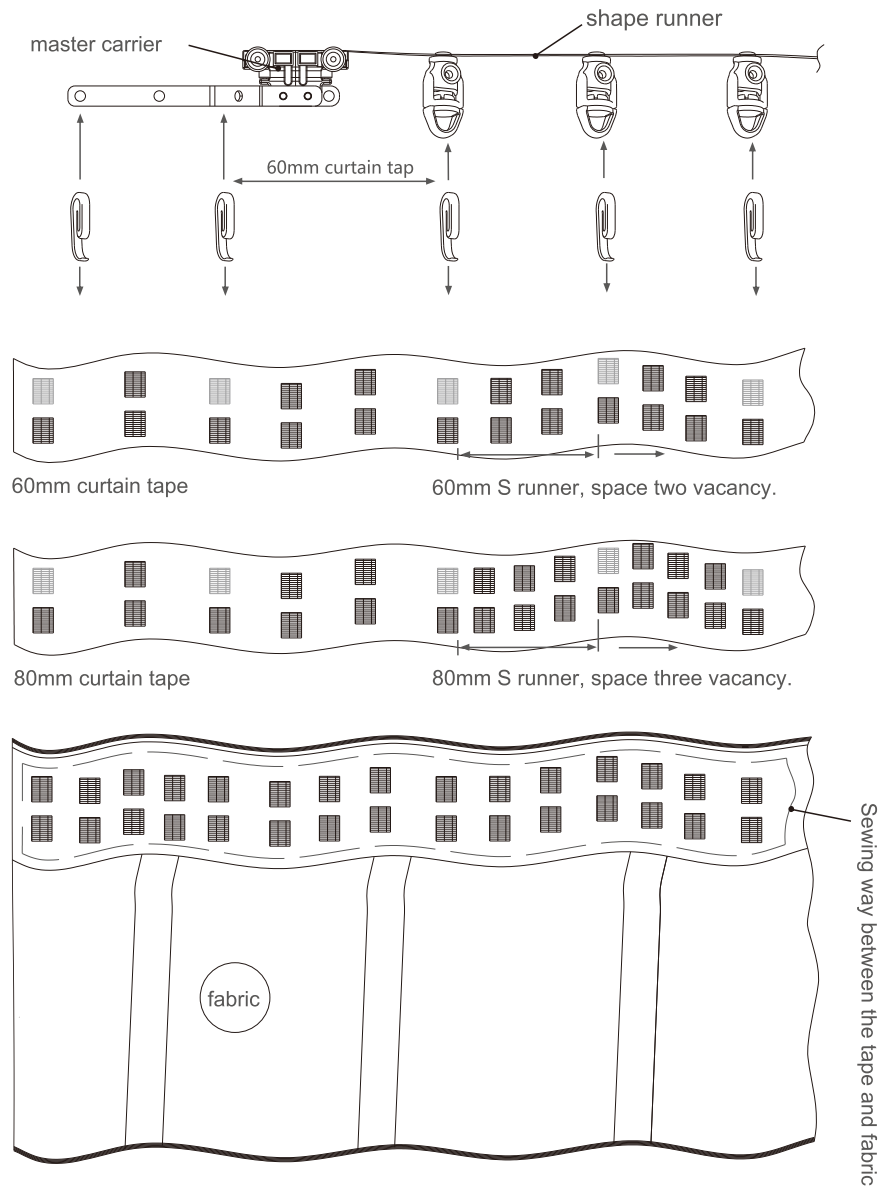
O Motor Wire Outlet Way



A S Shape Curtain Assembling Key Points

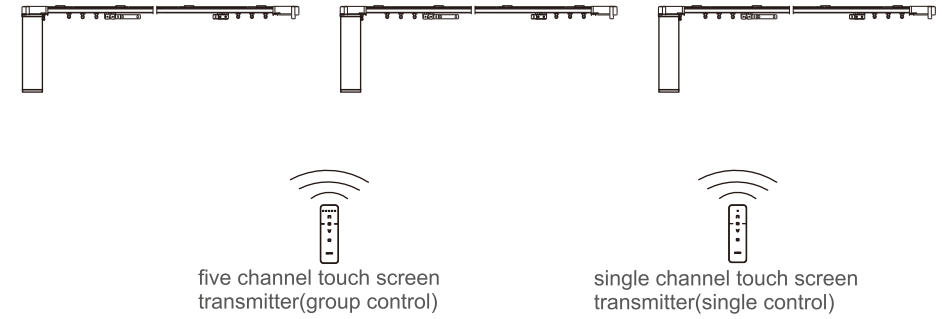


I Hanger And Fabric Installation Drawing

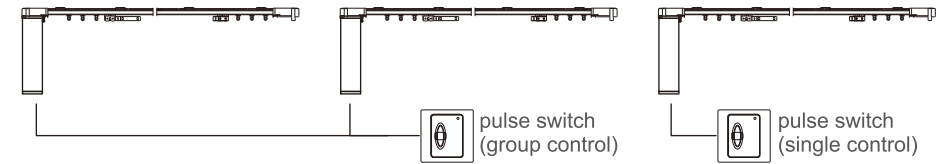


C Control Way

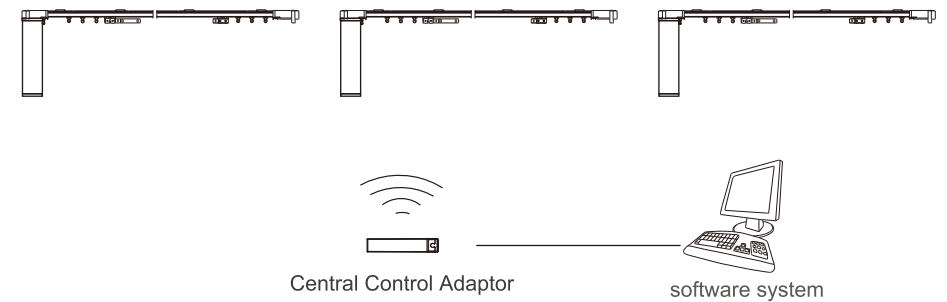
Remote control for inbuilt receiver
(single control, group control)



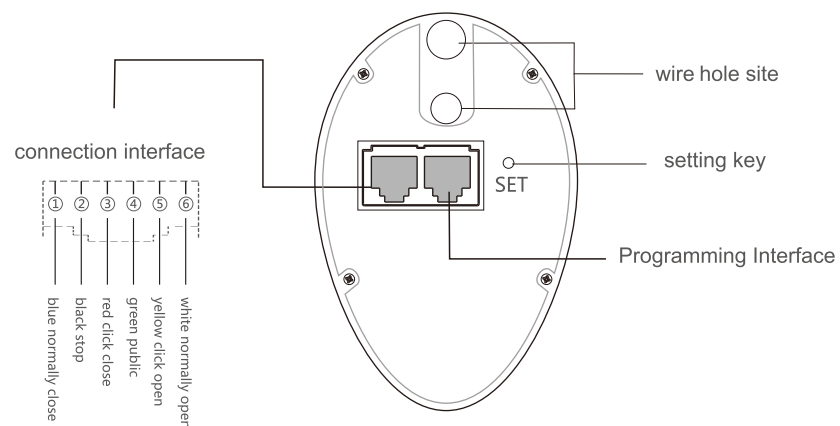
Pulse switch control
(single control, group control)



wireless central control transmitter+ software system realize single control/group control(optional)

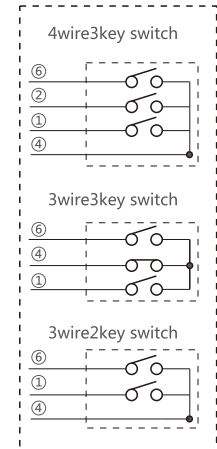


W Wire Connection Method



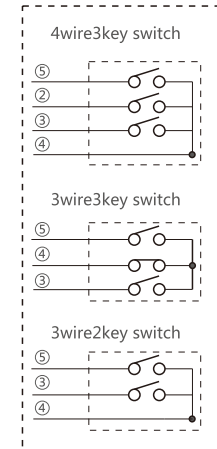
wire connection interface connection method

continues moving connection method



touch switch connection method

step moving connection method

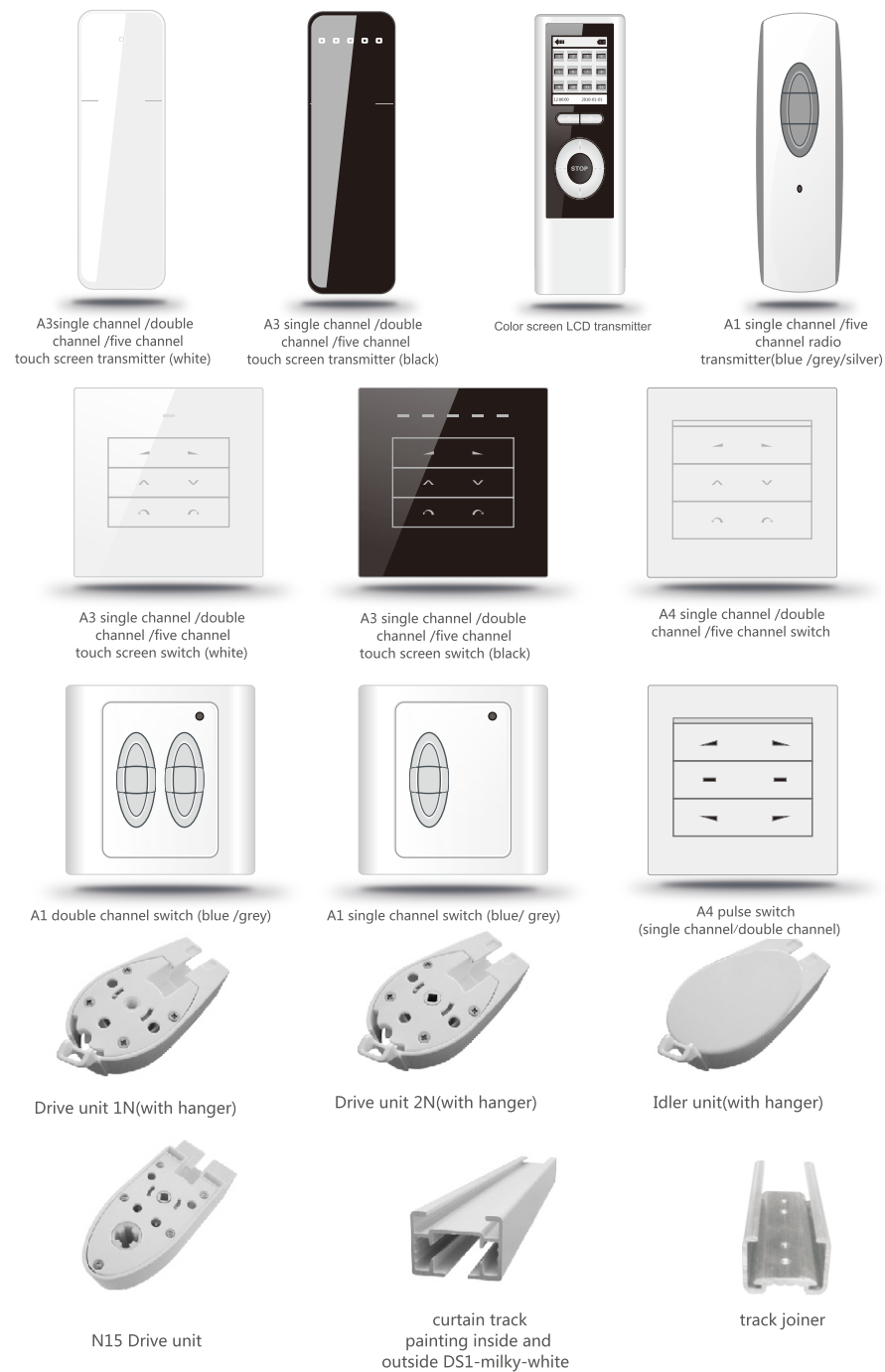


touch switch connection method

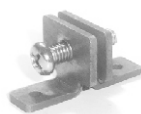
instruction

continues moving wire connection .let go from the key in 2 seconds ,curtain will keep going , press any key on the remote control , curtain will stop
Step moving wire connection .let go from the key in 2 seconds ,curtain will keep going , let go from the key over 2 seconds , curtain will stop

A Accessories



A Accessories



loop stop



Master carrier-without arm



Master carrier-with arm



belt clip A



belt clip B



bracket



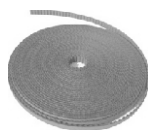
90 degree track adaptor



L shape bracket (single track)



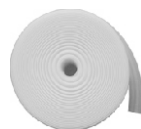
L shape bracket (double track)



belt



hanger(single hanger)



curtain tape



S runner(80mm)



S runner(60mm)



runner(stainless steel ring)

P problems and solutions

Problems	Possible reasons	Solutions
Press the transmitter ,but the motor doesn't work.	<ol style="list-style-type: none"> 1. There is no power 2. the battery inside the transmitter have no power 3. the remote control is over the maximum distance which the transmitter can control the motor 	<ol style="list-style-type: none"> 1. Check the electronic supply 2. renew the battery inside the transmitter 3. move the transmitter closer to the motor
Motor work, but the master carrier don't work.	Motor is no loading running.	Tighten the belt in the track
The motor can't stop working	Motor is no loading running.	Please contact technicians
The curtain open and close , but very slowly.	<ol style="list-style-type: none"> 1. the fabric is too long on the floor 2. The fabric is over weight 	<ol style="list-style-type: none"> 1. adjust the fabric length 2. Adjust the fabric weight
Abnormal noise during the motor working	Motor is no loading running or Sundries in the track	Check the track and clean it up
The motor temperature is too high	The working time of the motor is too long	If the temperature is too high to touch ,please cut power off and contact technicians
The motor move in opposite directions as the transmitter showing	Not a problem	Change the move direction setting

M Maintance

A.Clean up the motor and track timely by vacuum cleaner or cleaning cloth with little water or washing agent .

B.Please power off to extend the motor life if long time don't use it.

Notice:

1. Don't use volatile chemistry, thinner or benzene, which may lead to fire or other problems
2. For safety, please cut off the power before cleaning
3. Don't splatter water on the track ,motor and others main accessories ,because this may bring Some problems to the accessories , it will lead to leakage of electricity and fire ,also it may cause the user to been electric shock or other harms .